



Elinebergsskolan

Helsingborgs stads skolor

Welcome to Elinebergsskolan



HELSINGBORG

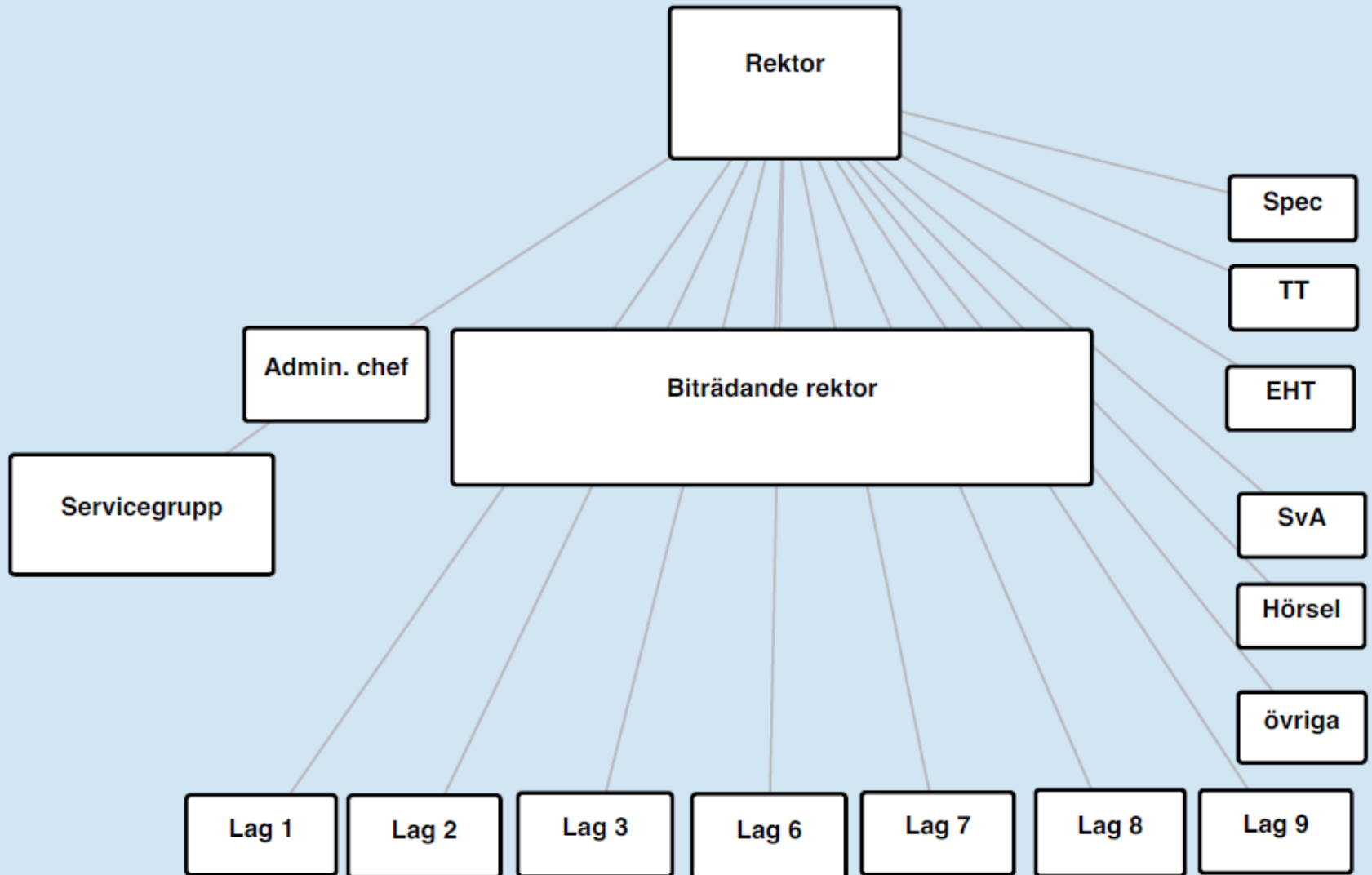


The school where pupils develop

- We are proud of Elinebergsskolan
- We are a:
 - Compulsory school
 - Compulsory school for learning disabilities
 - Special school and hearing integration
- 900 pupils from nearby residential areas as Elineberg, Brunnsparcken, Husensjö och Västra Ramlösa



Elinebergsskolan





Elinebergsskolan

Helsingborgs stads skolor

Our profiles

year 6-9

- Football
- Handball
- Fame (music, drama, dance)
- Extra time for deeper knowledge



HELSINGBORG



Many possibilities



- Café open for pupils and staff
- Classrooms for science studies
- Classrooms for home and consumer studies
- Classrooms for crafts and art
- Classrooms for music and smaller rooms for rehearsal, auditorium
- Different types of playgrounds
- Library
- Projectors in all classrooms
- Youth recreation center
- School restaurant
- One digital unit per pupil





- **A safe environment**
- **A school where the knowledge requirements are highly achieved**
- **An attractive school**





A safe environment in school

- **2006**

- 78% safe pupils
- 72% of the parents think that their children have a safe environment in school

- **2017**

- 95% safe pupils
- 99% of the parents think that their children have a safe environment in school





Elinebergsskolan

Helsingborgs stads skolor

Safety, well-being and working environment for the pupils



Team of teaching assistants,
teachers and councillors
Olweus- safety programme
Common view on our pupils
Café for pupils and staff
Teachers supervising during
breaks
Rules of the school
Relations



HELSINGBORG



Recommendeing the school

- **Elineberg**
 - 87% among the pupils can recommend the school to other pupils
 - 93% among the parents can recommend the school to friends
- **Other schools in Helsingborg**
 - 79% among the pupils can recommend the school to other pupils
 - 86% among the parents can recommend the school to friends





Grading scale

- Knowledge requirements for E,C,A
- D and B all requirements for the lower grade and considerable share of the higher grade
- E – 10, D – 12,5, C – 15, B – 17,5, A – 20
- F – 0, insufficient for a passing grade





Achievement of the knowledge requirements

- **Average grades** 170 (2011) 220 (2017)
- **88,2 qualified** for the college in 2017 (82,2
the city of Helsingborg)





Elinebergsskolan

Helsingborgs stads skolor

School health service



School nurses, guidance counsellors, special education teachers,
social workers/counsellors and school psychologist



HELSINGBORG



Our methods

- Individualizing
- Documentation
- Information of progression
 - development talks
 - personal development plan
 - mid-term reports
 - grades





Support activities

- Difficulty reaching knowledge requirements
 - find out why
- Additional adjustments
 - scanned material
 - extra training
 - clear instructions
 - digital aids
- Special support
 - investigation
 - special education teacher



A close-up photograph of a person's hands writing in a notebook. The person is holding a blue pen and is focused on their work. The background is blurred, showing other people in a classroom or office setting.

We think that everybody has the possibility to succeed

- Artistic-practical subjects help to improve the results in the theoretical subjects
- We want everybody to get to know each other in our mixed classes
- This is how we work
- Mentor counselling





Elinebergsskolan

Helsingborgs stads skolor

Elinebergsskolan

Våra elever är framtidskompetenta!



HELSINGBORG